



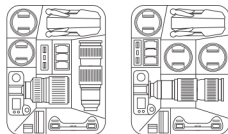
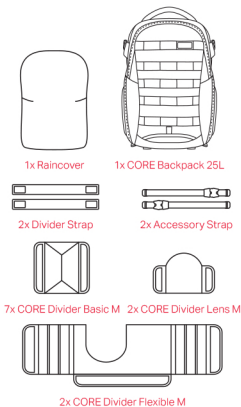
#### Tips and Terms of Use:

1. Keep the backpack dry. Prolonged exposure to moisture may cause deformation.
2. Avoid overloading the backpack to prevent wrinkles, deformation, or surface cracking.
3. Do not expose the backpack to direct sunlight, excessive heat, or chemical solvents.
4. Keep metal accessories away from humid or salty environments to prevent oxidation.
5. Store the backpack in a dry, well-ventilated area.
6. Clean with a soft brush or cotton cloth using appropriate materials.
7. Do not machine wash, as this may deform the backpack and oxidise metal parts.

#### Warranty conditions

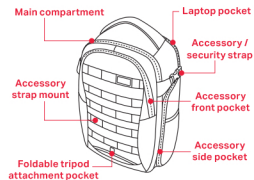
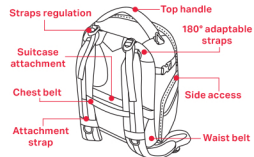
1. Calumet CORE Backpacks are covered by a 5-year limited warranty, effective from the date of purchase. The warranty covers defects in materials and workmanship under normal use and care, as outlined in the care instructions.
2. Natural wear and colour fading after long time sun exposure are not quality problem/defects.

Tips, Warranty & Term of use



Example of interior arrangement

CORE BACKPACK 25L



### Backpack 25L

Exterior Dimensions:  
33x23x47cm

Interior Dimensions:  
28x14x46cm

Weight:  
1.5kg



Website: [www.calumet.info](http://www.calumet.info)



Manuals: [www.calumet.info/manuals](http://www.calumet.info/manuals)

Mail us: [support@calumet.info](mailto:support@calumet.info)

Manufacturer:  
Sansa Europe Sp. z o.o.  
ul. Wersalska 47/75  
Lodz 91-212, Poland

Information